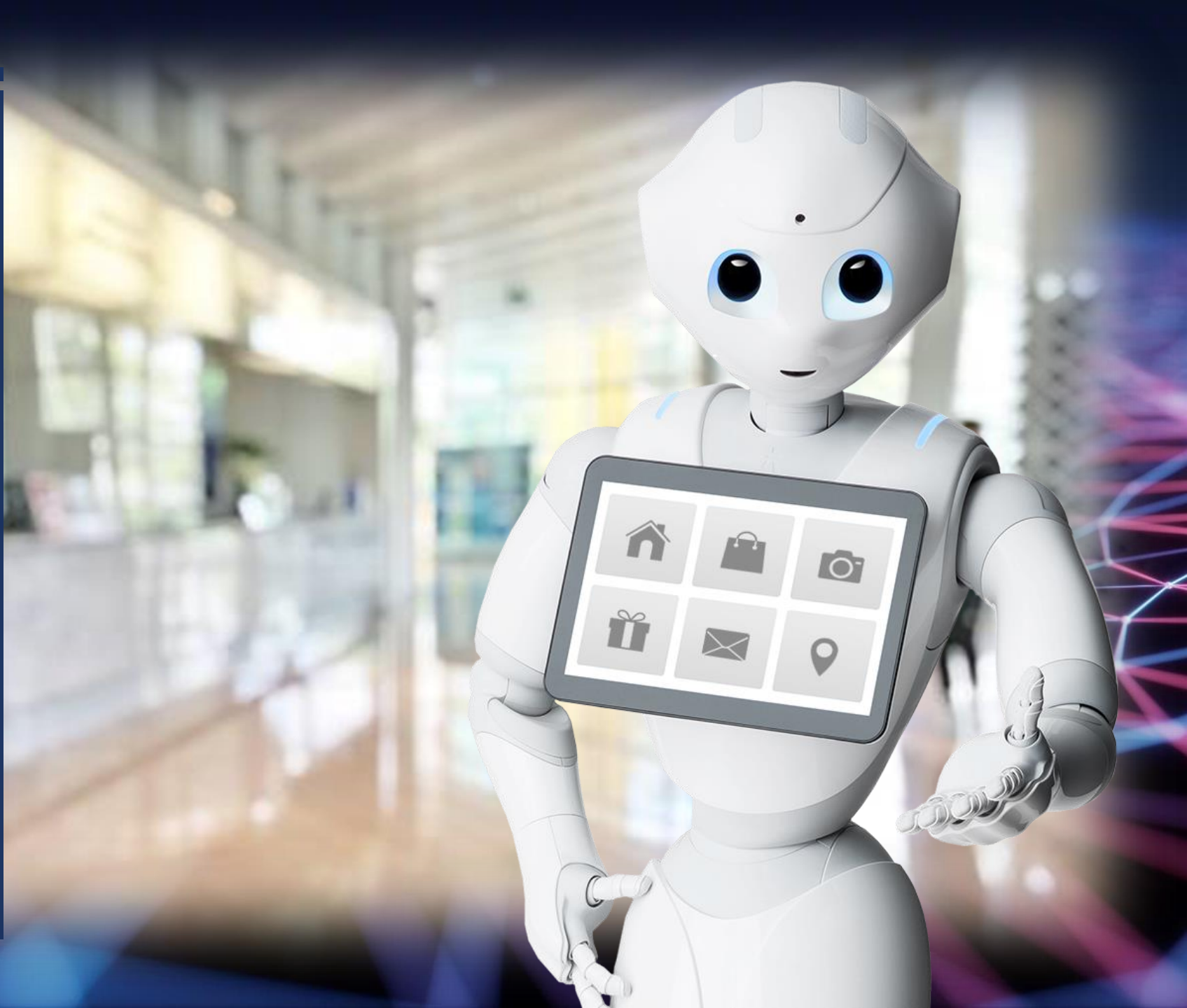




# EDGENET CONSULTING LIMITED

...Your Preferred IT Service Partner



# OUR PROFILE

- At EdgeNet, we believe in and pursue excellent service culture, delivering our solutions and operations in line with global best practices.
- We specialize in the provision and customization of humanoid robots tailored for our client's needs.
- With a drive to revolutionizing customer interactions, we offer state-of-the-art humanoid robots equipped with advanced AI capabilities.

## Corporate Business Mission

---

Our mission is to deliver exceptional IT Systems Integration services to businesses, leveraging the latest technologies and best practices to help them streamline their operations, enhance their competitiveness, and achieve their business goals.

## Core Business Vision

---

To be the leading provider of innovative and comprehensive IT solutions that empower businesses to achieve their full potential.



# OUR HUMANOID ROBOT

# INTRODUCTION

- In a rapidly evolving technological landscape, businesses must embrace innovation to stay ahead. Introducing Pepper, the humanoid robot, into your operations offers a unique opportunity to revolutionize customer engagement, streamline processes, and elevate your brand image.
- This document outlines the key features, benefits, and implementation strategies of Pepper, demonstrating how this cutting-edge technology can contribute to your business success.
- Pepper, developed by SoftBank Robotics, is a state-of-the-art humanoid robot designed to interact with humans naturally.
- With its advanced capabilities in speech and facial recognition, emotion detection, and autonomous movement, Pepper brings a new dimension to human-technology interaction.



# KEY FEATURES & CAPABILITIES

**Human-like Interaction:**  
Pepper engages users in natural conversations, enhancing customer experiences.

**Facial and Emotional Recognition:**  
Recognizes and responds to human emotions, adapting its behaviour accordingly.

**Autonomous Navigation:**  
Navigates seamlessly in dynamic environments, allowing it to move and interact freely.

**Customizable Applications:**  
Easily integrates with applications tailored to your business needs.

## BUSINESS BENEFITS



**Enhanced Customer Engagement:** Pepper creates memorable and personalized experiences, increasing customer satisfaction and loyalty.



**Efficient Operations:** Streamlines routine tasks, reducing operational costs and improving overall efficiency.



**Brand Differentiation:** Position your business as an innovator, setting it apart from competitors.



**Data Collection and Analytics:** Utilize data collected by Pepper to gain insights into customer preferences and behaviours.

# IMPLEMENTATION STRATEGY



## Assessment and Customization:

Conduct a thorough analysis of your business needs and customize Pepper's applications accordingly.



## Training and Integration:

Train your staff on Pepper's capabilities and integrate it into various customer touchpoints.



## Monitoring and Optimization:

Continuously monitor Pepper's performance and optimize its applications based on real-time feedback.







# SMART PEPPER

THE FLEXIBLE SOLUTION THAT MAXIMISES THE POTENTIAL OF YOUR ROBOT

**BASIC OFFER**  
Small Talk (basic conversation mode)  
+ Content Management System

**+**

**MODULES CATALOGUE**

|   |  |  |
|---|--|--|
| <br>Meet & Greet | <br>Information     | <br>Directions  |
| <br>Services   | <br>Entertainment | <br>Analytics |

**OR**

**YOUR TAILOR-MADE SOLUTION**



- SMART PEPPER is a modular and customizable solution. It will allow you to offer a large range of services to your visitors and customers.
- Select modules from our catalogue, integrate and deploy your own content easily with our content management system and get ready for a whole new level of natural robotic interaction.



# MAIN APPLICATION FEATURES

The different modules are sorted by theme (Front desk, Information...)

| Theme / Module | Front desk                                      | Information       | Entertainment | Orientation   | Services                 |
|----------------|---|-------------------|---------------|---------------|--------------------------|
|                | Meeting   | Presenter App     | Animal game   | Map           | Satisfaction survey      |
|                | Contact a department: technician, delivery, ... | Team presentation | Memory game   | Nearby places | Weather                  |
|                |   | FAQ               | Guess me      |               | Wifi access              |
|                |   |                   | Dance         |               | Customer data collection |
|                |   |                   | Quiz          |               | Planning                 |
|                |   |                   | Selfie App    |               |                          |

- The table shows you all the modules available on the SMART Pepper application. Just choose the modules for your Pepper robot and you will get your custom application.
- Technical support and warranty for the SMART Pepper App: 1 year

## INFORMATION – TEAM PRESENTATION

- This module allows Pepper to present your team in an original way. Pepper displays all the members of your team on his tablet and then presents the member of the team chosen by the user.
- You can add an image and a short text for each team member.



ôme  
LACE  
ector



Philippe  
CAPDEPUY  
Technical Director



## WHAT ARE YOU LOOKING FOR ?



## ORIENTATION - MAP

- Pepper will be able to show you a map of your premises and show you the use of each room.
- You can put as many plans as you have floors in your building.
- The configuration is done via the web interface of the application displaying the different rooms that Pepper must be able to indicate.

## ORIENTATION - NEARBY PLACES

- As you can see in the picture below, Pepper displays nearby points of interest that you recommend to your visitors (image, address of place of interest and contact information).



**EAUX MÉRIGNAC**  
**PORT**  
33700 Mérignac

08 92 78 30 15



**HOTEL KYRIAD PRESTIGE**  
116 Avenue de Magudas, 33700 Mérignac

05 57 92 00 00

## SERVICES - SATISFACTION SURVEY

- Thanks to this module, you can easily create a satisfaction survey and select the type of answer you want to use for each type of question (text field, multiple choice, etc.).
- All survey statistics are available in the web interface of your SMART Pepper application.

Are you satisfied with your visit?



A little



Not bad



A lot

V

# TOTAL PRICE OF YOUR SMART PEPPER SOLUTION

- Addition of desired modules + cost of configuration of the application (architecture and design according to the specifications and the customer's corporate design).
- The price may vary depending on the number of modules and the level of customization you desire.
- One of our expert Pepper engineers will work on your application to meet your expectations in terms of design and architecture between the different modules.



**Company Name:**

Commercial Bank



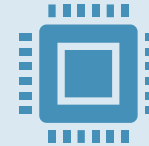
**Company Address:**

Lagos, Nigeria.



**Implementation date and timeframe:**

September 2022 – March 2023



**Hardware platform(s) used:**

Pepper Humanoid Robot

## SIMILAR PROJECT



**Address:**

Lagos Address

- 51B Ogundana Street  
off Allen Avenue Ikeja,  
Lagos.

Abuja Address

- 5 Kwaji Close, Wuse  
11 Abuja.



**Phone:**

+234 7082222295



**Email**

[sales@edgenetgroup.com](mailto:sales@edgenetgroup.com)



**Website:**

[www.edgenetgroup.com](http://www.edgenetgroup.com)



THANK YOU

